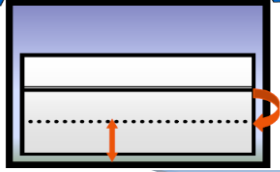


Top Ten Tips for UNSW Labs

Keep SASH Low



Fume Cabinets

Keep sash low: Close it when not working on it.
Turn it off if not in use for long period

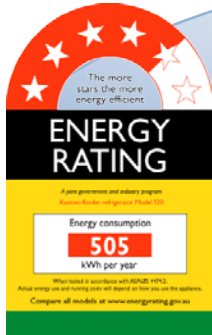


Thermal comfort management

Set room temperature around 24-25C (unless required otherwise). Keep lab door closed if air conditioning is on

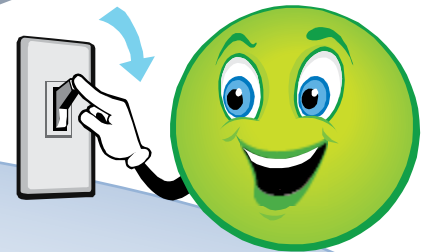
Energy Efficient Equipment

Always select energy efficient lab equipment. (at least 4 star energy rating for refrigerators, fridges, etc)



Turn it off

Turn it off when not needed: lights, computers, incubators, ovens, water baths, heating and cooling system etc

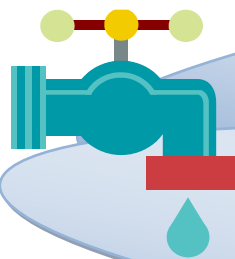
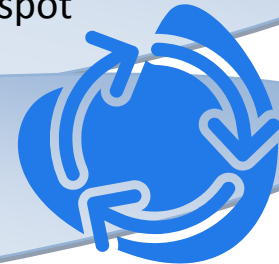


Lighting

Use energy saver light bulbs only (contact FM assist at 93855111 for replacement of globes). Use light sensors, try potential for spot lighting,

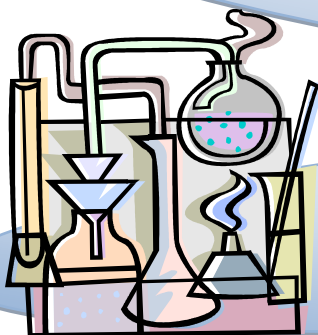
Water recycling/reuse

Don't waste water... try to recycle and reuse



Water leakage

Report faults and water leakages immediately to FM Assist on 93855111



Redesign your experiments

Aim for minimum energy and water consumption

Save Water - Save World

Always use a full load for autoclave and dishwasher.
Reduce – Reuse – Recycle



Water efficient equipment

Select the most water efficient lab equipment especially lab cooling devices